



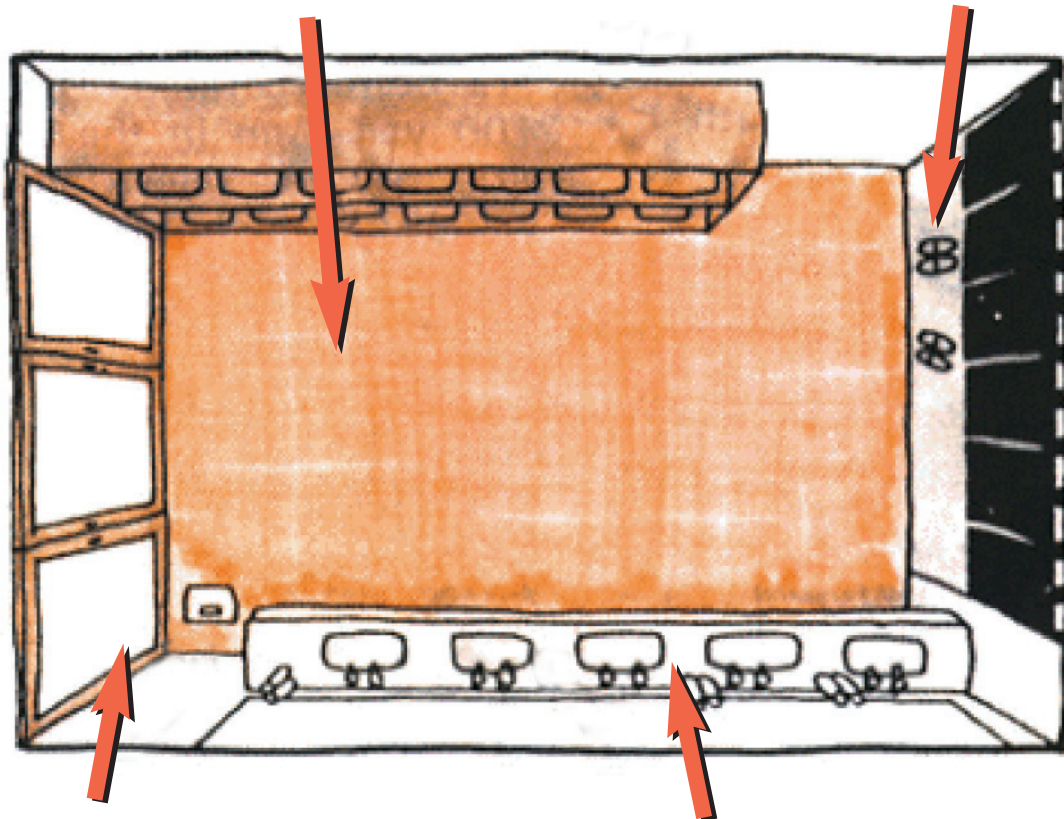
Onsen Etiquette

Experience one of Japan's most treasured past times

In the main changing area there are lockers & baskets. Remove all of your clothing and jewelry and place in the locker or basket. Leave your large bath towel with your clothing and take the modesty towel with you only. Lock the door of your locker (if available), and take the key with you. If there are no lockers in the changing area, there are sometimes safety deposit lockers for valuable items in the main reception area of the onsen. Normally these lockers are coin operated and the coin is returned when you come back to the locker

Flooring is generally a Bamboo flooring in the changing area.

Please remove your shoes and place in the shoe locker at the entrance to the onsen, do not wear foot wear inside the onsen.



There are scales located near the entrance to the Bathing area.

Please close the door when entering the bathing area

There are wash basins, combs, toothbrushes and hair dryers and tonic supplied for your convenience in the hand basin area.

Please dispose of any items you use in the provided bins.

Onsen Etiquette

Experience one of Japan's most treasured past times



Use the Bucket and the seat provided and wash your body first before entering the bath.

Make sure the towel is rinsed before entering the bath.



CAUTION: When entering the bath, depending on the bath, the water may be extremely hot.

Do not put your towel in the bath water; fold your towel and put it on your head when in the bath, or place it on the side of the bath.

When walking around the bath or changing bath types, use the towel as a "modesty towel".

Dry as much of the excess water as possible from your body before entering the changing area.

Place any wet towels which you borrowed from the onsen in the baskets provided in the changing area.

